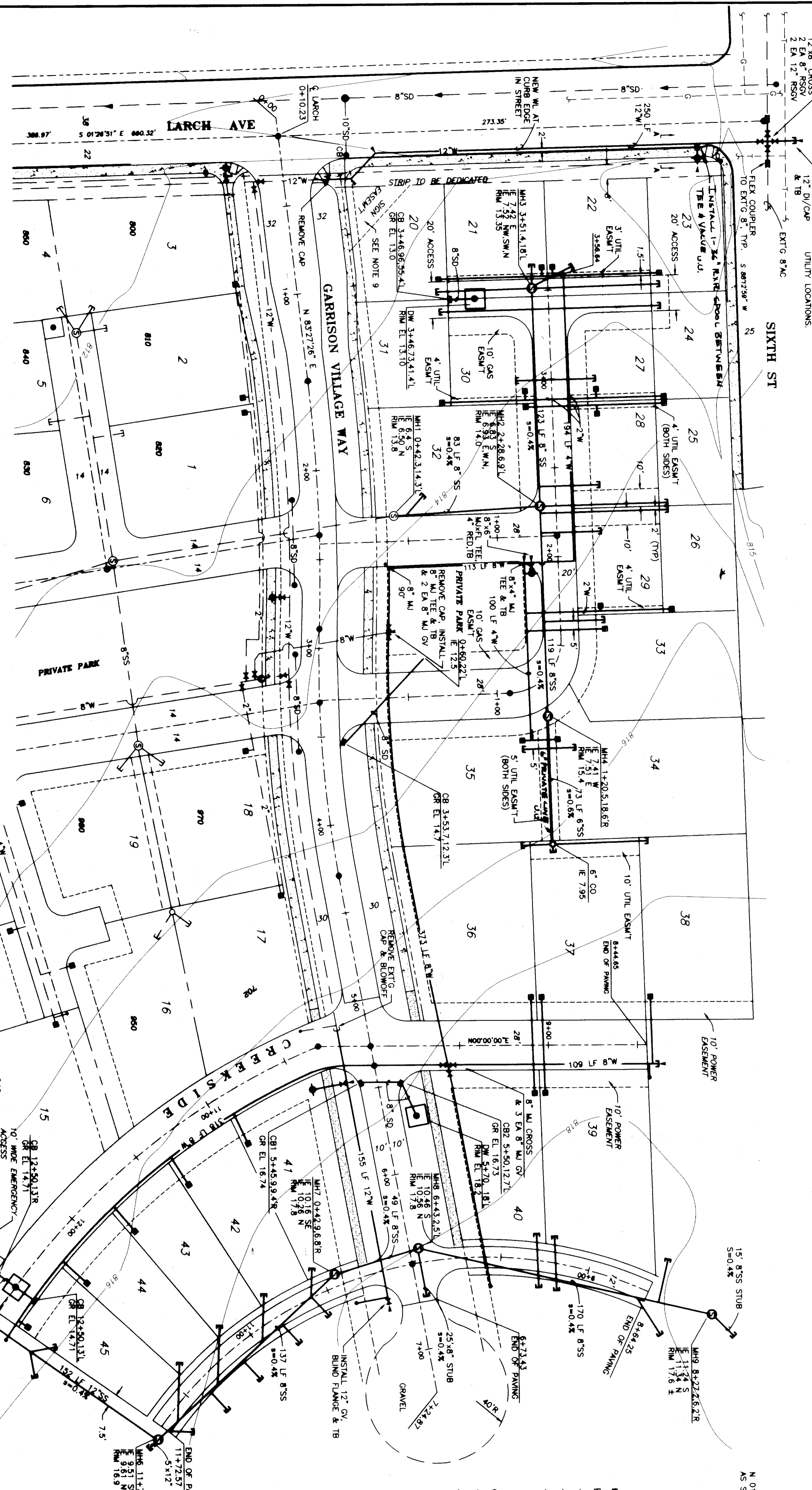


CUT IN
12"x8" CROSS
2 EA 8" RSV
2 EA 12" RSV

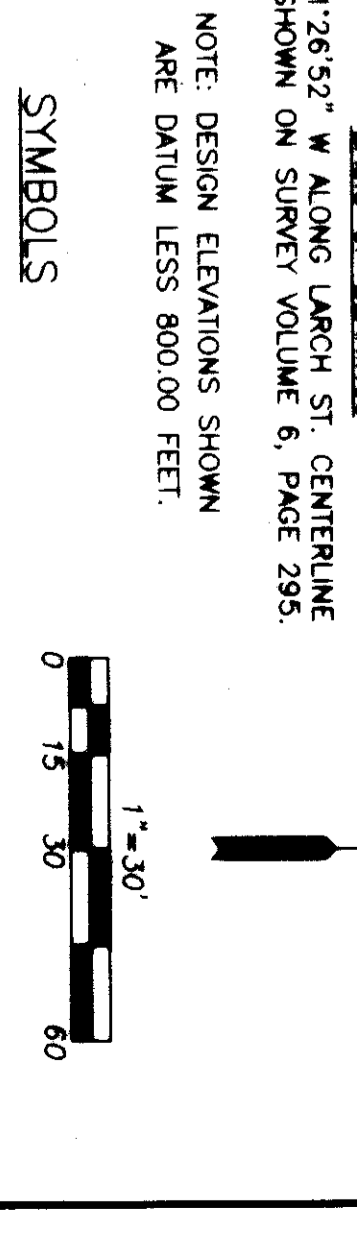
SIXTH ST

NOTE: VERIFY EXIST'G UTILITY LOCATIONS.



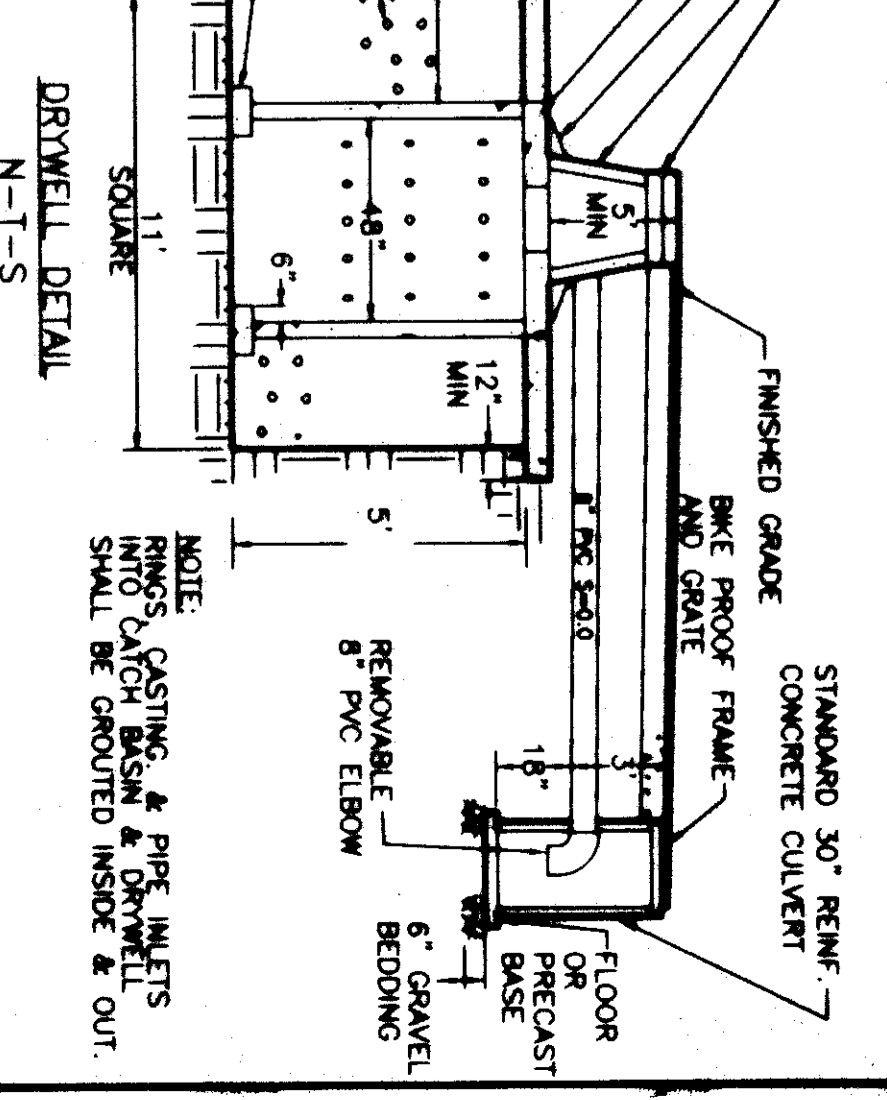
BASED ON A SURVEY & PRELIMINARY PLAT PREPARED BY TOMKINS SURVEYING AUGUST, 1997.

NOTE: DESIGN ELEVATIONS SHOWN ARE DATUM LESS 900.00 FEET.



NOTES:

1. ALL CONSTRUCTION SHALL CONFORM TO THE CITY OF COLLEGE PLACE STANDARD SPECIFICATIONS.
2. CONTRACTOR'S ATTENTION IS SPECIFICALLY DIRECTED TO SECTIONS PERTAINING TO:
 - SEWER MANHOLES 6A, 6B & 6C
 - STORM MANHOLES 50, 5C & 5E
 - CURB INLETS 5A, 5B, 5C & 5E
 - WATER SERVICES 7A & 7E
 - FIRE HYDRANTS 7C & 7E
3. ALL 12" W. TO BE CISO DUCTILE IRON MECHANICAL JOINT PIPE OTHER DIAMETERS TO BE AMVA (C90 PVC CL 50, EXCEPT 2" TO BE GALVANIZED IRON.
4. ALL SEWER PIPE TO BE SPP35 PVC.
5. WHEN FOUNDATION IS PRESENT, OVER EXCAVATE TO 8' FOUNDATION MATERIAL PER WSOT 9-03.17.
6. AIR TESTING REQUIRED ON SEWERS & LATS.
7. PRESSURE TEST (180 PSI) ON WATER.
8. PLACE MONUMENTS SHOWN PER CITY STD.
9. SIGN EASEMENT IS SHOWN APPROXIMATE ONLY.



SUPERSEDES 061-0012

SHEET 1 OF 3 CALL BEFORE YOU DIG: (800) 332-2344

DATE: 7-20-97
DRAWN BY: [Signature]
DWG. NO.: 061-0015

VALLEY DEVELOPMENT
VILLAGES OF GARRISON CREEK PHASE II
UTILITY PLAN

HALL ENGINEERING ASSOCIATES
10 SOUTH MAIN ST. • RICHMOND, VA 23261 • (800) 332-2344
FAX (800) 332-2347 • www.halleng.com

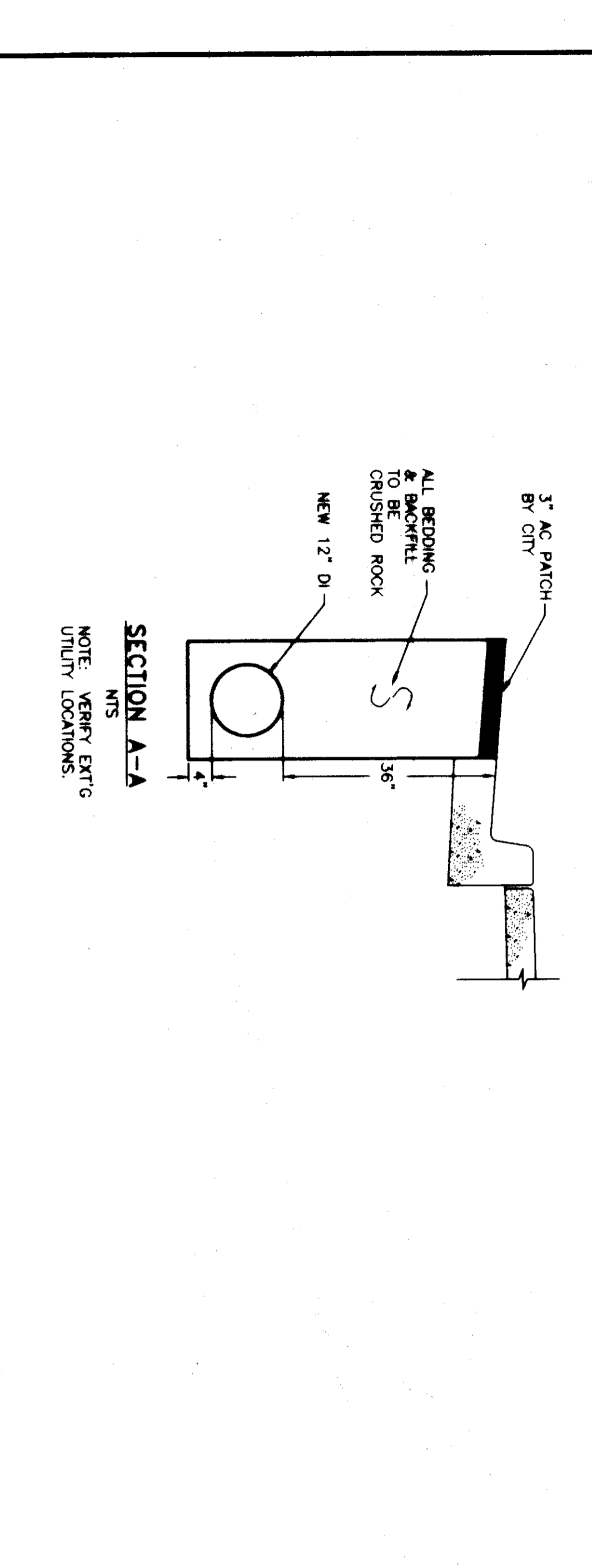
APPROVED: [Signature]
CITY ENGINEER

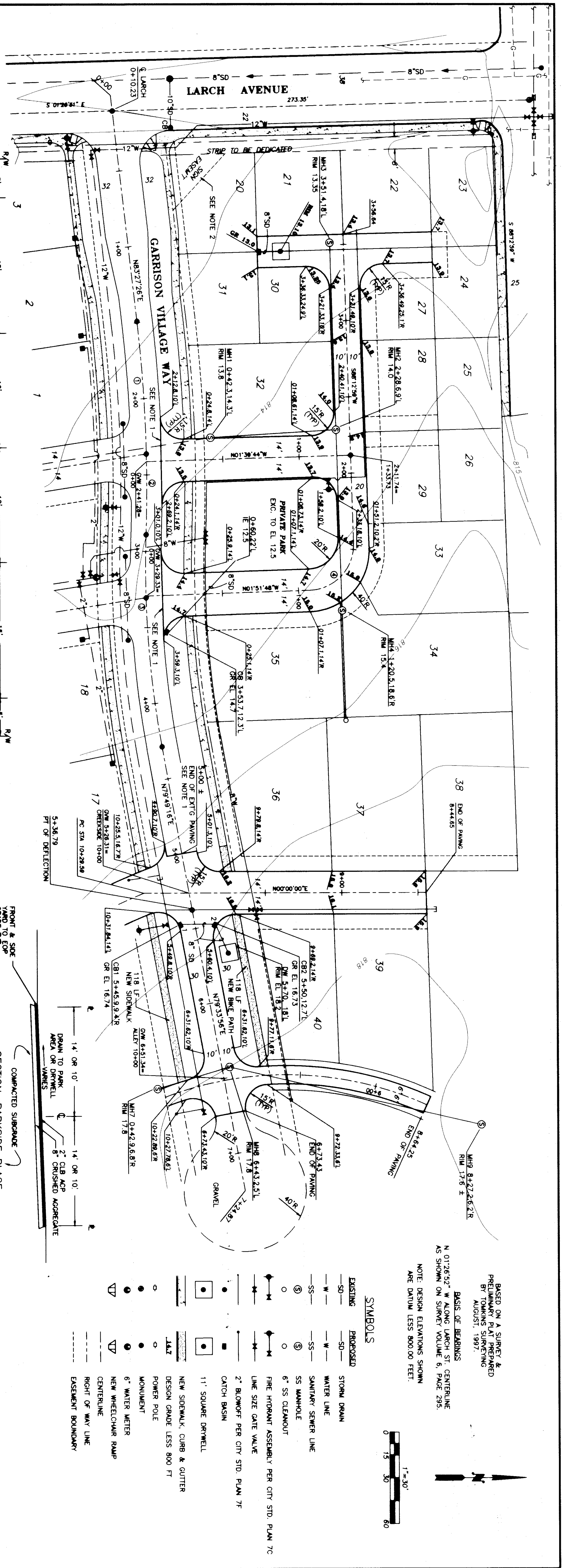
DATE: 1-22-98

DATE: 01-18-97

DATE: 01-18-97

DATE: 01-18-97





BASED ON A SURVEY & PRELIMINARY PLAN PREPARED BY TOMKINS SURVEYING AUGUST, 1997.

BASIS OF BEARINGS
 N 01°26'52" W ALONG LARCH ST. CENTERLINE
 AS SHOWN ON SURVEY VOLUME 6, PAGE 295.

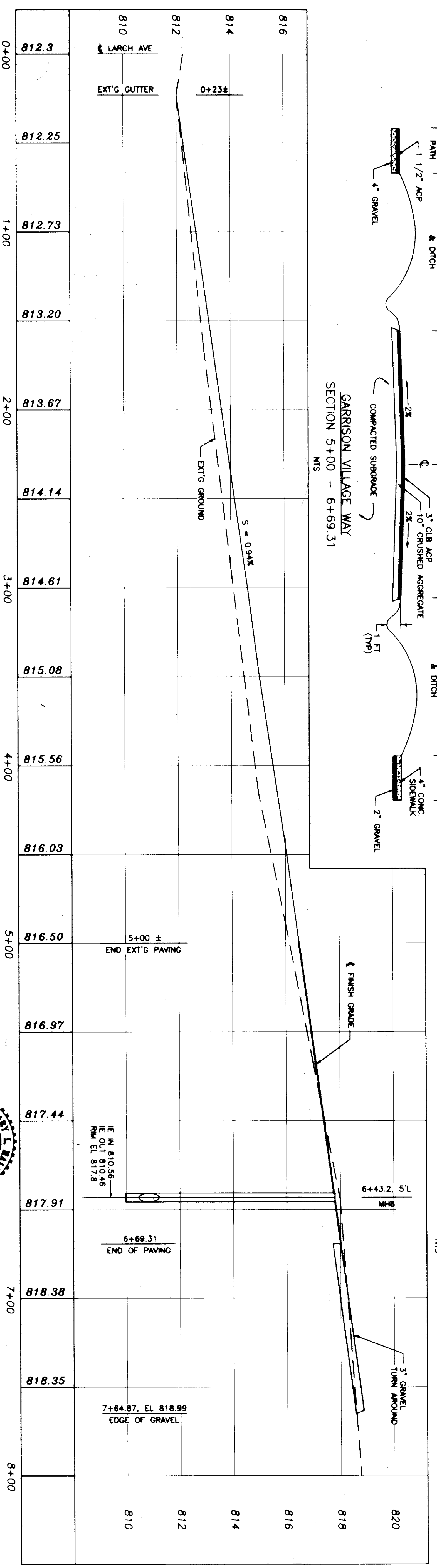
NOTE: DESIGN ELEVATIONS SHOWN ARE DATUM LESS 800.00 FEET.

SYMBOLS

- | EXISTING | PROPOSED | DESCRIPTION |
|----------|----------|---------------------------------------------|
| —SD— | —SD— | STORM DRAIN |
| —W— | —W— | WATER LINE |
| —SS— | —SS— | SANITARY SEWER LINE |
| ○ | ○ | 6" SS MANHOLE |
| ○ | ○ | 6" SS CLEANOUT |
| — | — | FIRE HYDRANT ASSEMBLY PER CITY STD. PLAN 7C |
| — | — | LINE SIZE GATE VALVE |
| — | — | 2" BLOWOFF PER CITY STD. PLAN 7F |
| — | — | CATCH BASIN |
| — | — | 11" SQUARE DRAINWELL |
| — | — | NEW SIDEWALK, CURB & GUTTER |
| — | — | DESIGN GRADE LESS 800 FT |
| — | — | POWER POLE |
| — | — | MONUMENT |
| — | — | 6" WATER METER |
| — | — | NEW WHEELCHAIR RAMP |
| — | — | CENTERLINE |
| — | — | RIGHT OF WAY LINE |
| — | — | EASEMENT BOUNDARY |

NOTE:

1. SAW CUT NEAT LINE & MATCH EXT'G. PAVEMENT.
2. SIGN EASEMENT IS SHOWN APPROXIMATE ONLY.



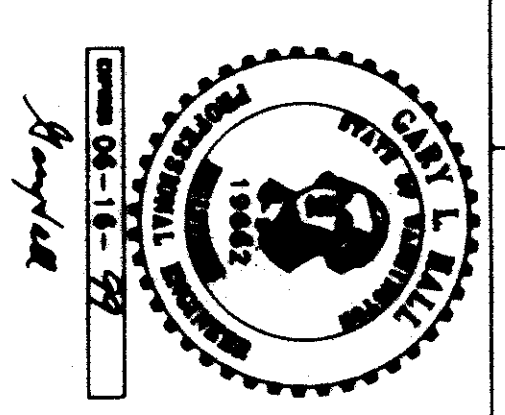
CURVE TABLE

NO.	Δ	RAIUS	LENGTH	TANGENT
1	05°15'20"	840.52'	86.27'	43.17'
2	03°13'04"	840.34'	52.81'	26.41'
3	12°08'41"	657.93'	138.65'	70.09'
4	08°55'13"	30'	47.00'	29.88'

PROFILE GARRISON VILLAGE WAY
 1"=30' H. 2" V.

APPROVED: _____
 CITY ENGINEER

DATE: 1-22-15

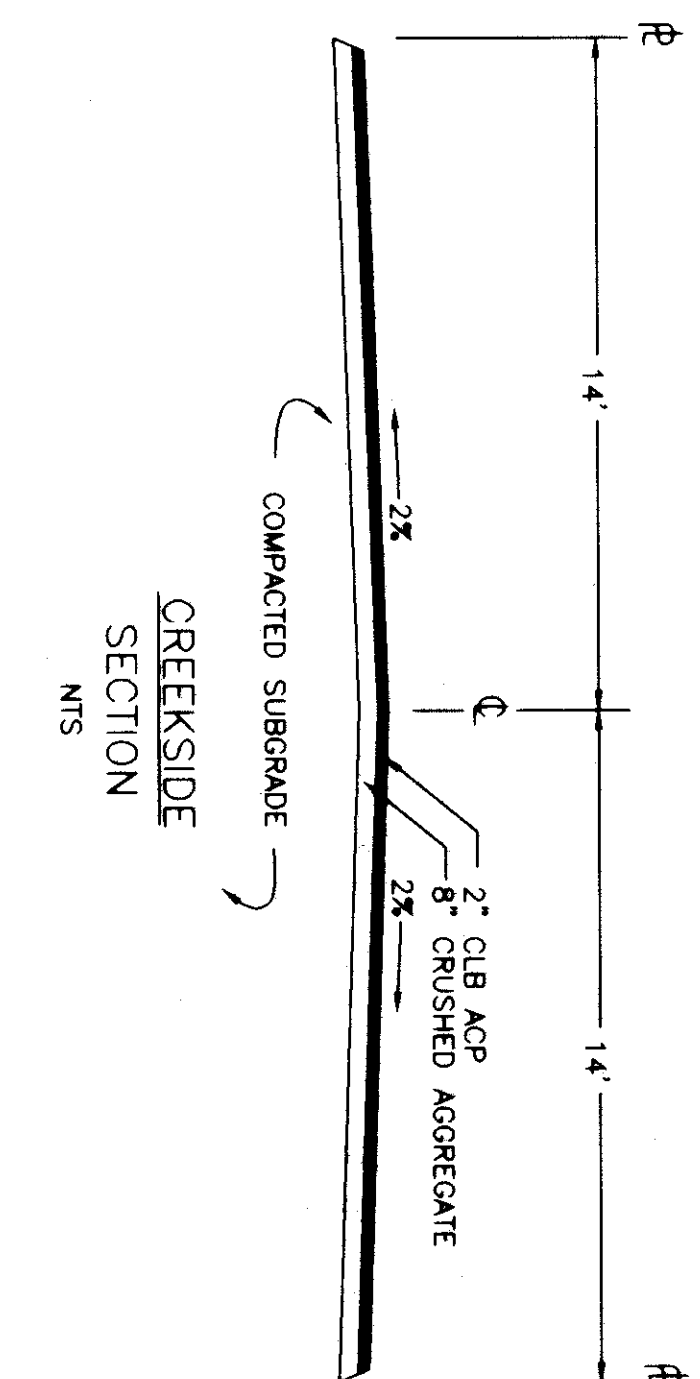
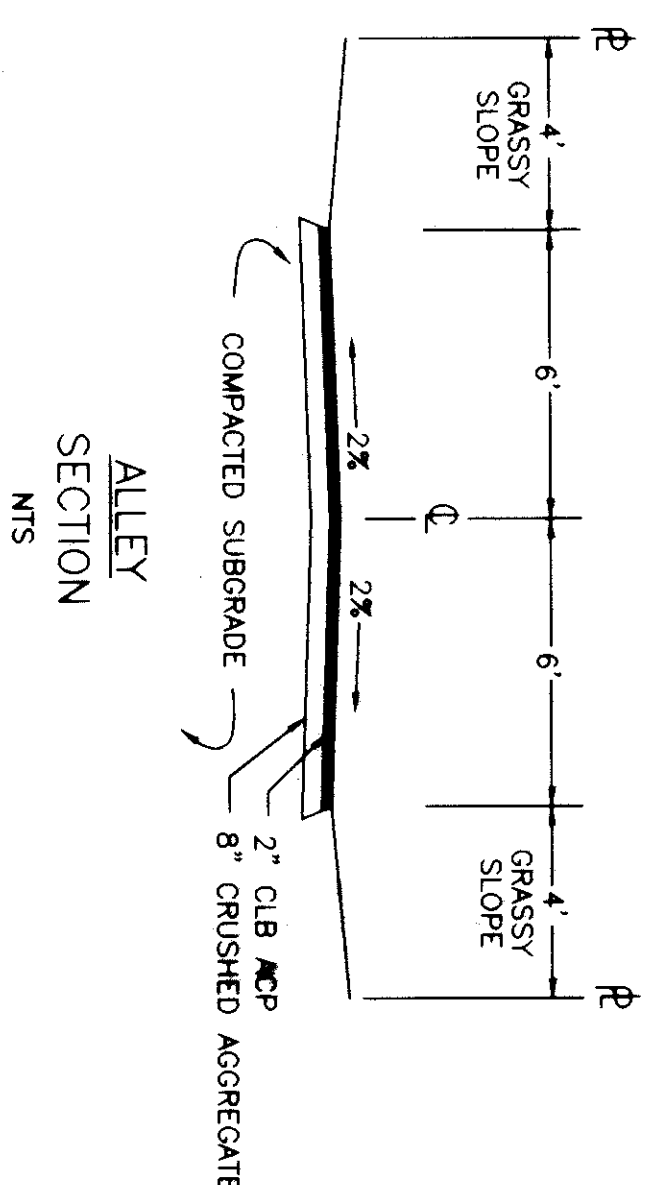
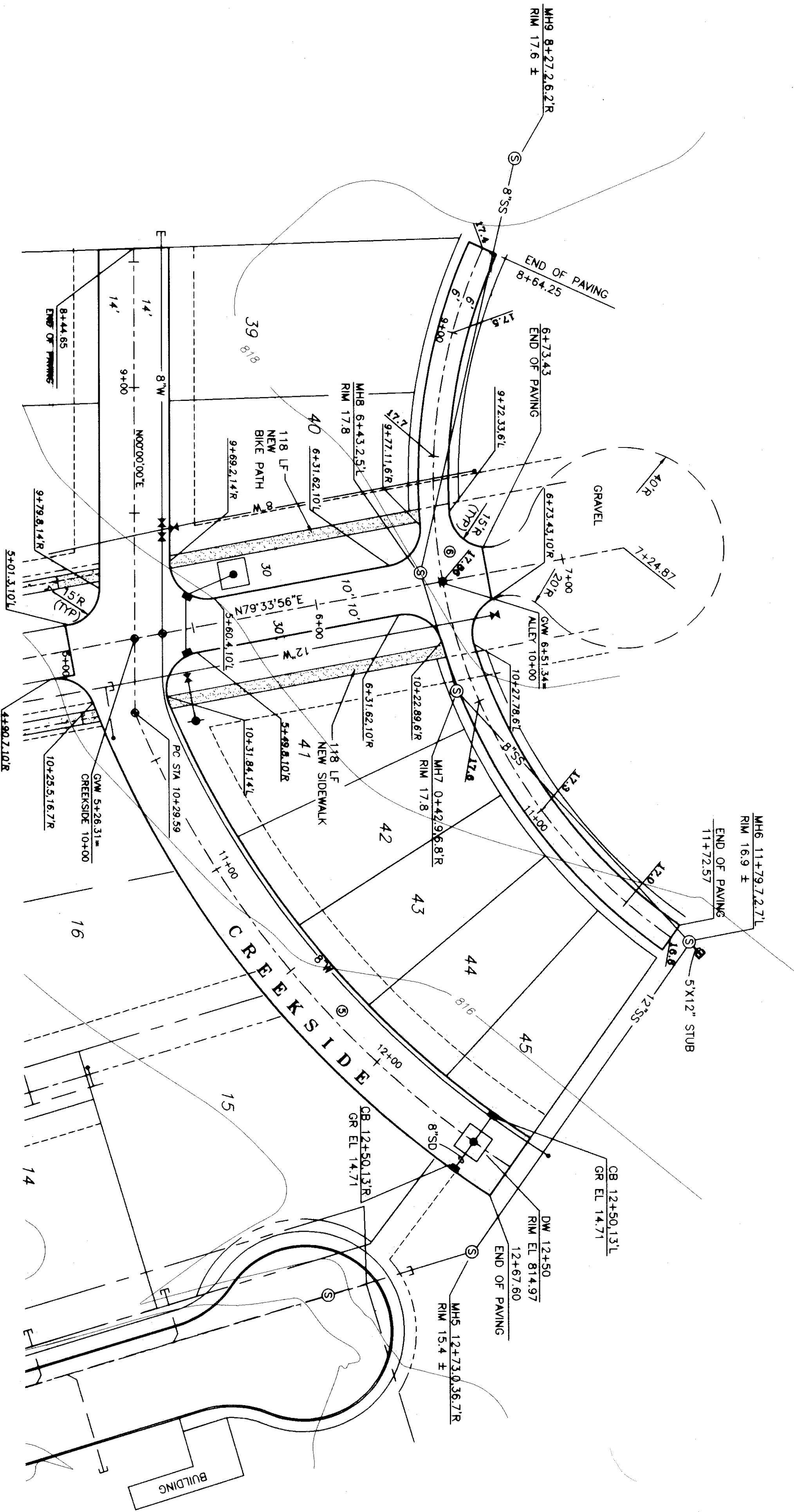
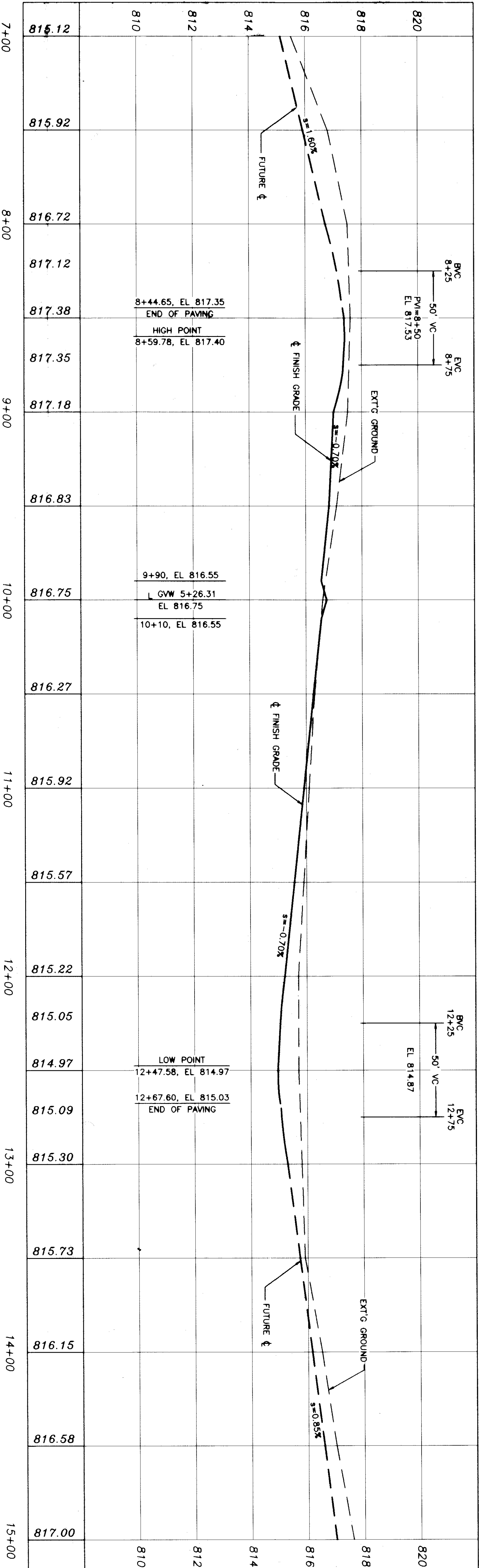


SUPPERSEDES 061-0013
SHEET 2 OF 3 CALL BEFORE YOU DIG: (800) 332-2344

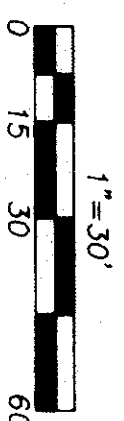
VALLEY DEVELOPMENT
 VILLAGES OF GARRISON CREEK PHASE II
 GARRISON VILLAGE WAY PLAN/PROFILE

HALL ENGINEERING ASSOCIATES
 10 SOUTH HARRISON - ROANOKE, VA 24058 - (800) 332-2344
 FAX (540) 286-2887 - info@halleng.com

CURVE TABLE			
NO.	A	RADIUS	LENGTH / TANGENT
5	3405.35'	400'	238.01' / 122.65'
6	7913.05'	223'	309.27' / 184.54'

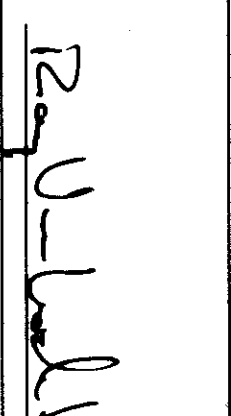


BASIS OF BEARINGS
 N 01°26'52" W ALONG LARSON ST. CENTERLINE
 AS SHOWN ON SURVEY VOLUME 6, PAGE 295.
 NOTE: DESIGN ELEVATIONS SHOWN
 ARE DATUM LESS 800.00 FEET.

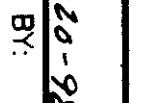


- SYMBOLS**
- | | | | |
|------|-----------------------------------------------------|------|-----------------------------------------------------|
| -SD- | EXISTING STORM DRAIN | -SD- | PROPOSED STORM DRAIN |
| -W- | EXISTING WATER LINE | -W- | PROPOSED WATER LINE |
| -SS- | EXISTING SANITARY SEWER LINE | -SS- | PROPOSED SANITARY SEWER LINE |
| ⊙ | 6" SS CLEANOUT | ⊙ | 6" SS CLEANOUT |
| ⊙ | FIRE HYDRANT ASSEMBLY PER CITY STD. PLAN 70 | ⊙ | FIRE HYDRANT ASSEMBLY PER CITY STD. PLAN 70 |
| ⊙ | LINE SIZE GATE VALVE | ⊙ | LINE SIZE GATE VALVE |
| ⊙ | CATCH BASIN | ⊙ | CATCH BASIN |
| ⊙ | 11" SQUARE DRYWELL | ⊙ | 11" SQUARE DRYWELL |
| ⊙ | NEW SIDEWALK CURB & GUTTER DESIGN GRADE LESS 800 FT | ⊙ | NEW SIDEWALK CURB & GUTTER DESIGN GRADE LESS 800 FT |
| ⊙ | POWER POLE MONUMENT | ⊙ | POWER POLE MONUMENT |
| ⊙ | 6" WATER METER | ⊙ | 6" WATER METER |
| ⊙ | NEW WHEELCHAIR RAMP | ⊙ | NEW WHEELCHAIR RAMP |
| ⊙ | CENTERLINE | ⊙ | CENTERLINE |
| ⊙ | RIGHT OF WAY LINE | ⊙ | RIGHT OF WAY LINE |
| ⊙ | EASEMENT BOUNDARY | ⊙ | EASEMENT BOUNDARY |

SUPersedes 061-0014
SHEET 3 OF 3 CALL BEFORE YOU DIG: (800) 332-2344

APPROVED: 
 CITY ENGINEER



DATE: 7-22-92
 DRAWN BY: 

VALLEY DEVELOPMENT
 VILLAGES OF GARRISON CREEK PHASE II
 CREEKSIDE PLAN/PROFILE

HALL ENGINEERING ASSOCIATES
 10 SOUTH ALBURN • SPANGLER, VA 9935 • (540) 582-2300
 FAX (540) 586-2817 • halleh@halleng.com