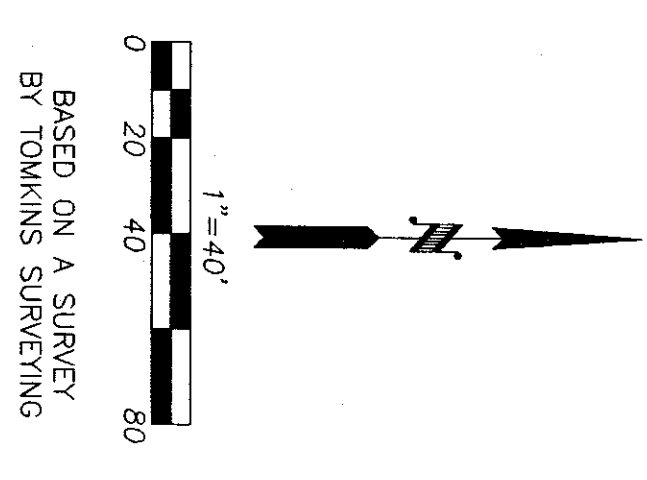
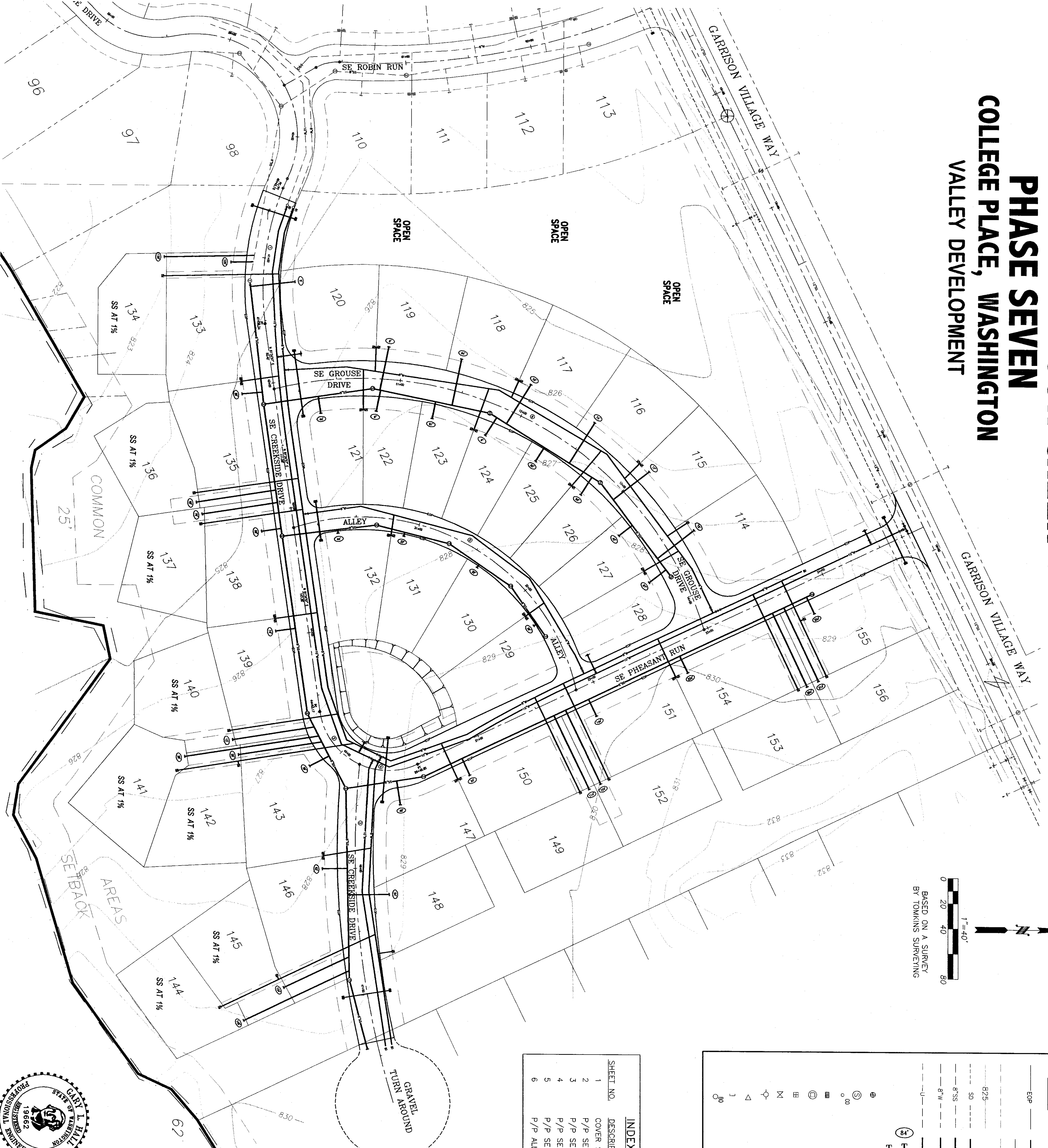


VILLAGES AT GARRISON CREEK

PHASE SEVEN

COLLEGE PLACE, WASHINGTON

VALLEY DEVELOPMENT

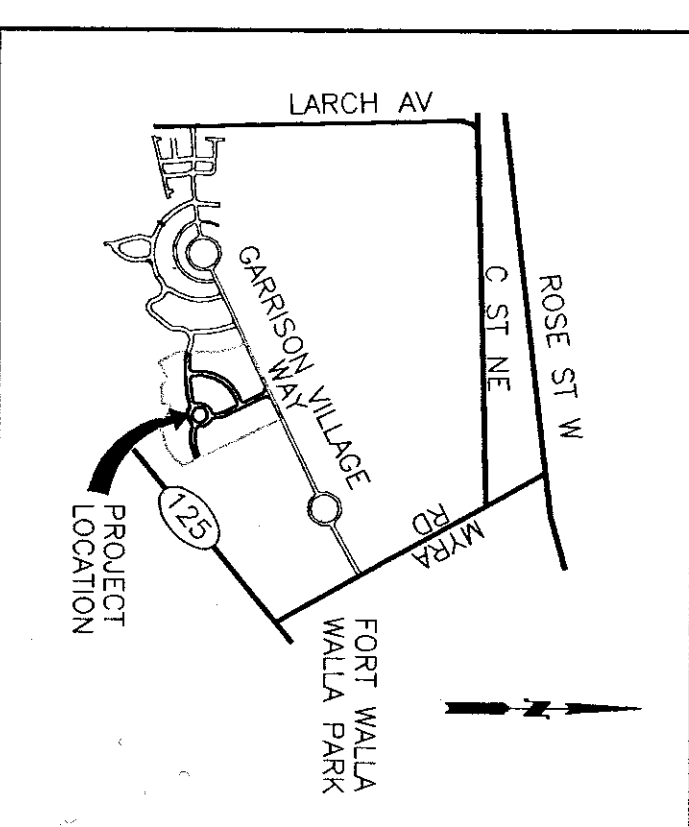


SYMBOL LEGEND	
EXISTING	PROPOSED
— EOP —	— EOP —
— ROW / PROP LINE —	— ROW / PROP LINE —
— EASEMENT —	— EASEMENT —
— ORIGINAL GROUND CONTOUR —	— ORIGINAL GROUND CONTOUR —
— 8" S —	— 8" S —
— 8" W —	— 8" W —
— UTILITY LINE —	— UTILITY LINE —
— 4" SS SERVICE —	— 4" SS SERVICE —
— WATER SERVICE —	— WATER SERVICE —
— MONUMENT —	— MONUMENT —
— SANITARY SEWER MANHOLE —	— SANITARY SEWER MANHOLE —
— CLEAN OUT —	— CLEAN OUT —
— CATCH BASIN —	— CATCH BASIN —
— STORM DRAIN MANHOLE —	— STORM DRAIN MANHOLE —
— WATER METER —	— WATER METER —
— VALVE —	— VALVE —
— FIRE HYDRANT —	— FIRE HYDRANT —
— REDUCER —	— REDUCER —
— PIPE STUB-OUT —	— PIPE STUB-OUT —
— BLOW OFF —	— BLOW OFF —

SHEET NO.	DESCRIPTION
1	COVER SHEET
2	P/P SE CREEKSIDE DRIVE 40+00 TO 46+50
3	P/P SE CREEKSIDE DRIVE 45+00 TO 48+00
4	P/P SE PHEASANT DRIVE
5	P/P SE GROUSE COURT
6	P/P ALLEY

APPROX. EARTHWORK		
CREEKSIDE DR	CUT	FILL
670 CY	20 CY	0 CY
PHEASANT DR	830 CY	0 CY
GROUSE CT	650 CY	0 CY
ALLEY	270 CY	0 CY
POND	380 CY	0 CY
TOTAL	2800 CY	20 CY

NOTE: QUANTITIES SHOWN ARE IN-PLACE WITH NO SHRINK / SWELL FACTOR.



CONSTRUCTION NOTES

- EXISTING UTILITIES ARE SHOWN IN APPROXIMATE LOCATIONS ONLY. CONTRACTOR SHALL NOTIFY THE UNDERGROUND UTILITY LOCATION CENTER 48 HRS. IN ADVANCE OF ANY CONSTRUCTION. CONTRACTOR SHALL VERIFY ALL UTILITY LOCATIONS PRIOR TO CONSTRUCTION.
- CONTRACTOR IS SOLELY RESPONSIBLE FOR THE MEANS, METHODS & TECHNIQUES OF CONSTRUCTION AS WELL AS MAINTAINING A SAFE WORK PLACE FOR ALL CONSTRUCTION ACTIVITIES.
- ALL WORK SHALL BE PERFORMED IN ACCORDANCE WITH THE LATEST SPECIFICATIONS AND STANDARD PLANS.
- CONTRACTOR SHALL CONTROL DUST IN ACCORDANCE WITH LOCAL AIR POLLUTION CONTROL AUTHORITY AND DEPT. OF ECOLOGY.
- CONTRACTOR IS RESPONSIBLE FOR APPLYING FOR AND OBTAINING ALL PERMITS NECESSARY. IT IS THE SOLE RESPONSIBILITY OF THE CONTRACTOR TO ADHERE TO ALL PERMIT REQUIREMENTS.
- PLACE MONUMENTS SHOWN PER CITY STD.
- CONTRACTOR SHALL PROVIDE OWNER WITH ONE SET OF PLANS SHOWING ALL CHANGES FROM THE APPROVED DESIGN DIMENSIONS AND ELEVATIONS FOR USE IN PREPARING CONSTRUCTION RECORD DRAWINGS.

STORM SEWER NOTES

- STORM SEWER PIPE TO BE SDR 35 PVC.
- CATCH BASINS SHALL BE PER CITY OF COLLEGE PLACE STD. PLAN NO. 311.02 WITH INLAND FOUNDRY FRAME NO. 432 AND GRATE STYLE D-2.
- BEDDING AND BACKFILLING TRENCHES SHALL BE IN ACCORDANCE WITH CITY STANDARD PLAN NO. 310.07.

SEWER NOTES

- SEWER PIPE TO BE SDR 35 PVC IN 13' JOINTS.
- TRENCH EXCAVATION & BACKFILL SHALL BE IN CONFORMANCE WITH CITY OF COLLEGE PLACE STANDARD PLAN NO. 310.07.
- ALL PIPE SHALL BE FULLY BEDDED WITH A MINIMUM OF 4" UNDER PIPE AND 6" OVER PIPE WITH MATERIALS PER THE STANDARD SPECIFICATIONS OR AS APPROVED BY CITY ENGINEER PRIOR TO USE.
- SERVICE LATERALS SHALL BE FULLY BEDDED.
- WHEN GROUNDWATER IS PRESENT, OVER EXCAVATE TO 12" BELOW INVERT AND BACKFILL WITH COMPACTED CLASS B FOUNDATION MATERIAL PER WSDOT 9-03.17.
- MANHOLE CONSTRUCTION IN ACCORDANCE WITH CITY OF COLLEGE PLACE STD. PLAN NO. 310.01 & 310.06.
- SEWER SERVICE CONNECTIONS SHALL BE IN ACCORDANCE WITH CITY OF COLLEGE PLACE STD. PLAN 310.05.
- LAY SERVICE PIPES FOR LOTS 134, 136, 137, 140, 141, 142, 144, & 145 AT 1%.
- END OF ALL SEWER STUBS SHALL BE LOCATED AND MARKED WITH A STEEL FENCE POST AND 12 GA COPPER TRACER WIRE.
- AIR TEST AT 5 PSI. ADDITIONALLY, ACCEPTANCE BASED ON SATISFACTORY T.V. REPORT. CONTRACTOR SHALL CALL CITY OF COLLEGE PLACE WASTEWATER DIRECTOR 48 HOURS BEFORE REQUIRED T.V. INSPECTION.

WATER NOTES:

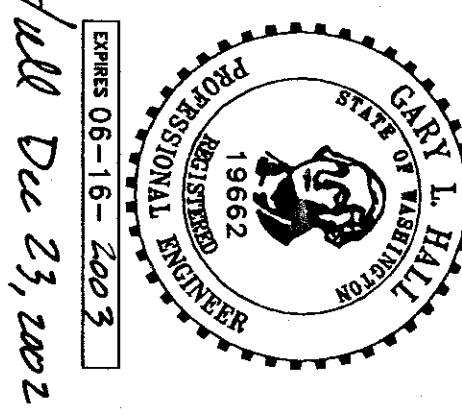
- ALL CONSTRUCTION SHALL CONFORM TO THE CITY OF COLLEGE PLACE STANDARD SPECIFICATIONS.
- CONTRACTOR'S ATTENTION IS SPECIFICALLY DIRECTED TO SECTIONS PERTAINING TO:
 - THURST BLOOMING STD. PLAN NOS. 210.09, 10, & 11
 - WATER SERVICES STD. PLAN NOS. 210.05, 06, & 07
 - FIRE HYDRANTS STD. PLAN NO. 210.02
 - BLOW OFF PER STD. PLAN NO. 210.08
- ALL FIRE HYDRANTS TO HAVE STORTZ ADAPTORS.
- ALL 6" & 10" W TO BE CL 50 DUCTILE IRON MECHANICAL JOINT. 8" W LINE MAY BE AWWA C 900 PVC CL 150, 2" SHALL POLYETHYLENE.
- PRESSURE TEST (180 PSI.) ON WATER.

APPROVED:
CITY OF COLLEGE PLACE

Paul Heston
PUBLIC WORKS DIRECTOR

DATE: 12-23-02

Chris
DATE: 12-23-02



Checked Dec 23, 2002

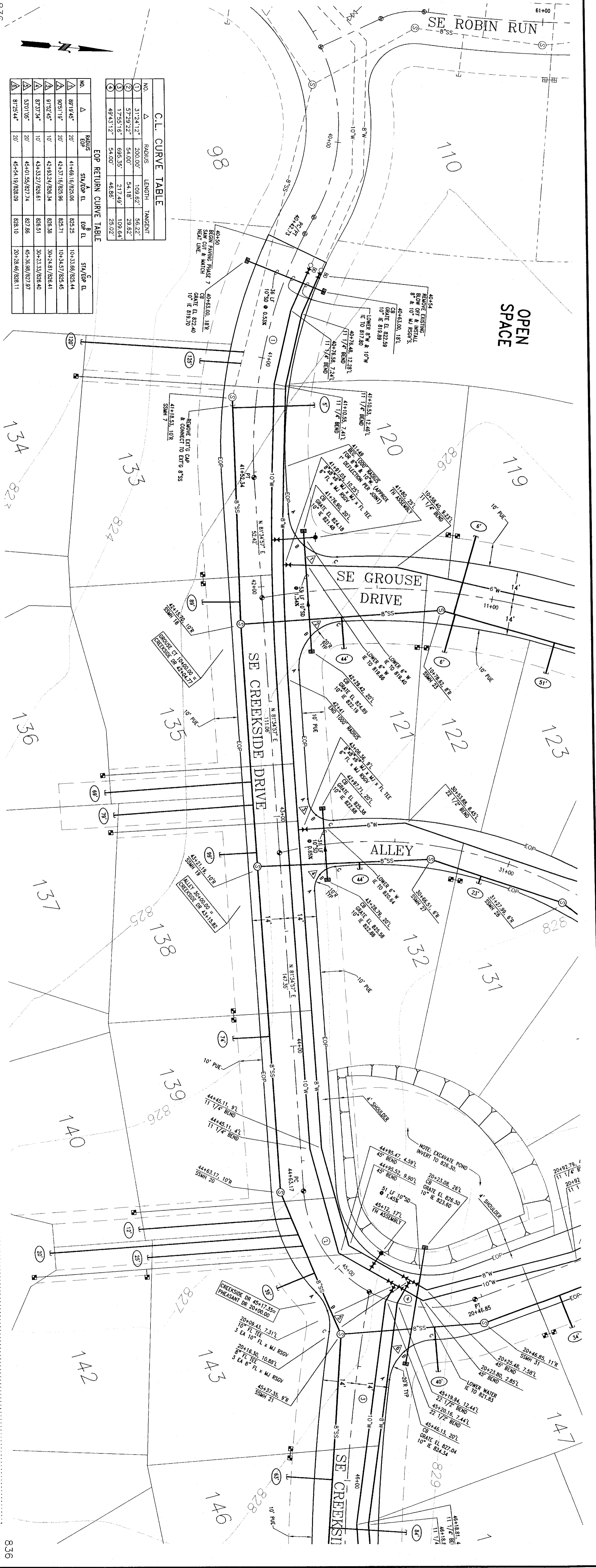
DATE: 12-23-02
DRAWN BY: RJD
DWG. NO.: 061-0077

CALL BEFORE YOU DIG (800) 332-2344

VALLEY DEVELOPMENT
VILLAGES AT GARRISON CREEK PHASE VIII
COVER SHEET

HALL ENGINEERING ASSOCIATES
10 SOUTH ALBURN • KENNEWICK, WA 98336
(360) 582-2200 • FAX (360) 586-2997

COVER DWG



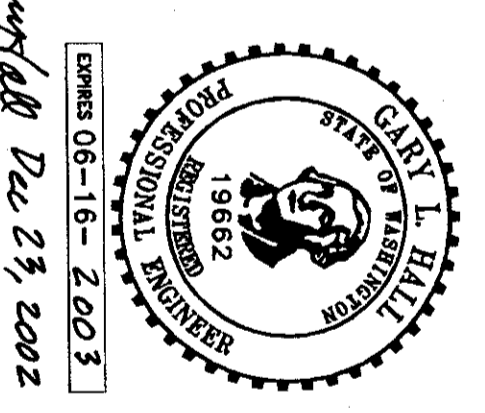
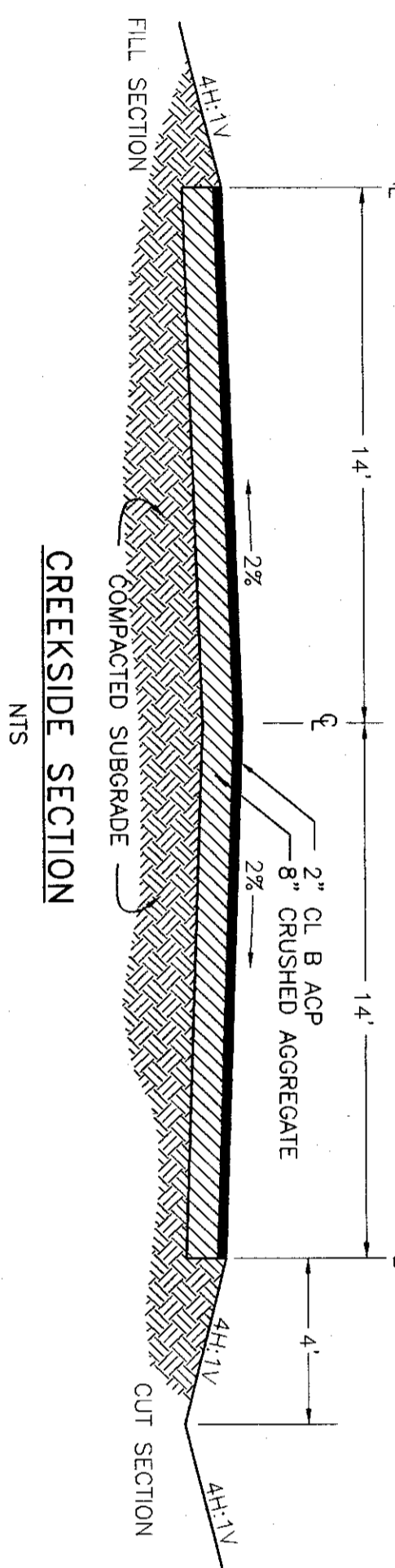
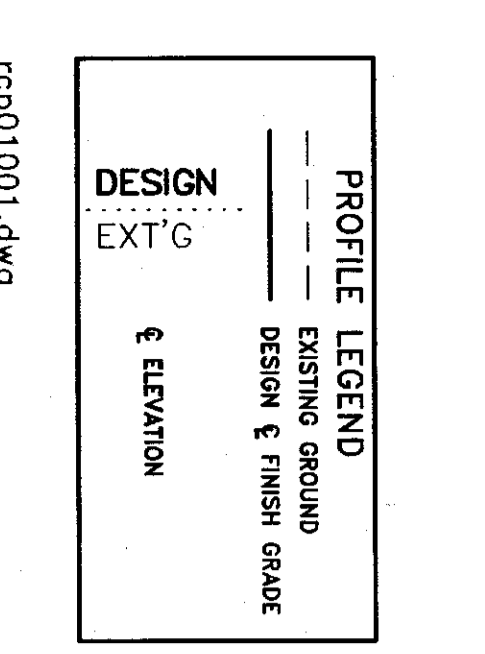
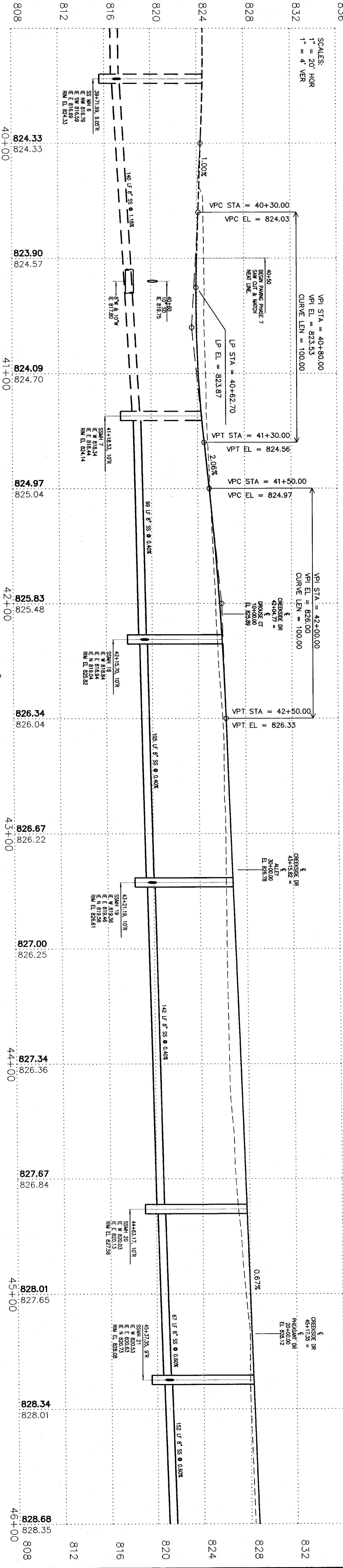
C.L. CURVE TABLE

NO.	Δ	RADIUS	LENGTH	TANGENT
1	31°24'12"	200.00'	109.62'	56.22'
2	57°29'22"	54.00'	54.18'	29.62'
3	17°55'18"	695.35'	217.49'	109.64'
4	49°43'12"	54.00'	46.86'	25.02'

EOP RETURN CURVE TABLE

NO.	Δ	BEARS	SIN Δ/OP	OP EL.	SIN Δ/OP EL.
1	31°24'12"	20	0.5149616	825.23	104.3366/825.44
2	57°29'22"	20	0.4243716	825.71	104.457/825.45
3	17°55'18"	20	0.3042481	826.38	304.2481/826.41
4	49°43'12"	20	0.7527774	827.98	454.389/827.97
5	81°25'44"	20	0.9828109	828.10	204.2846/828.11

SCALES:
1" = 20' HOR
1" = 4' VER



DATE: 12-23-02
DRAWN BY: RJD
DWG. NO.: 061-0078

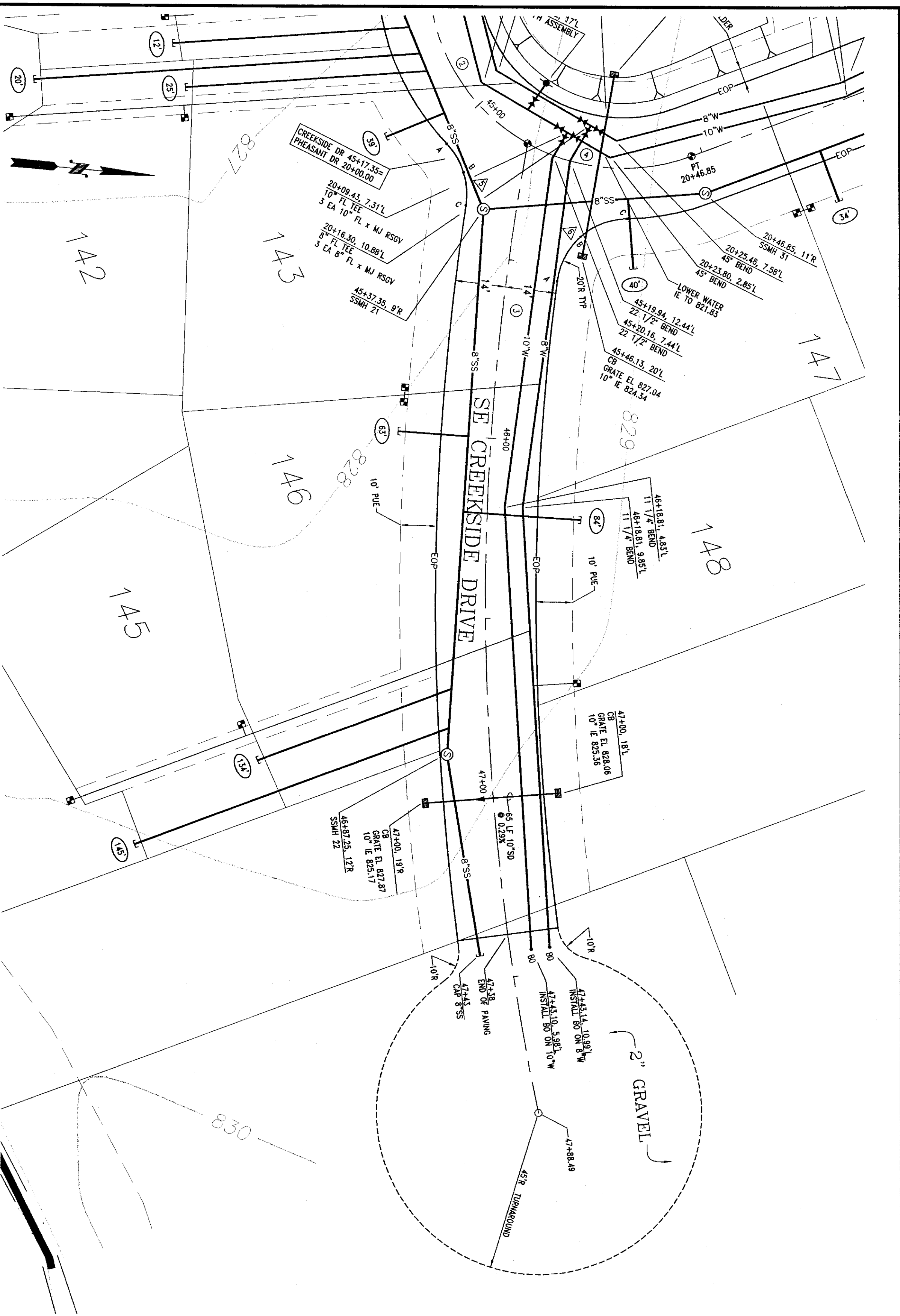
VALLEY DEVELOPMENT

VILLAGES AT GARRISON CREEK PHASE VII
PIP SE CREEKSIDE DRIVE 40+00 TO 46+00

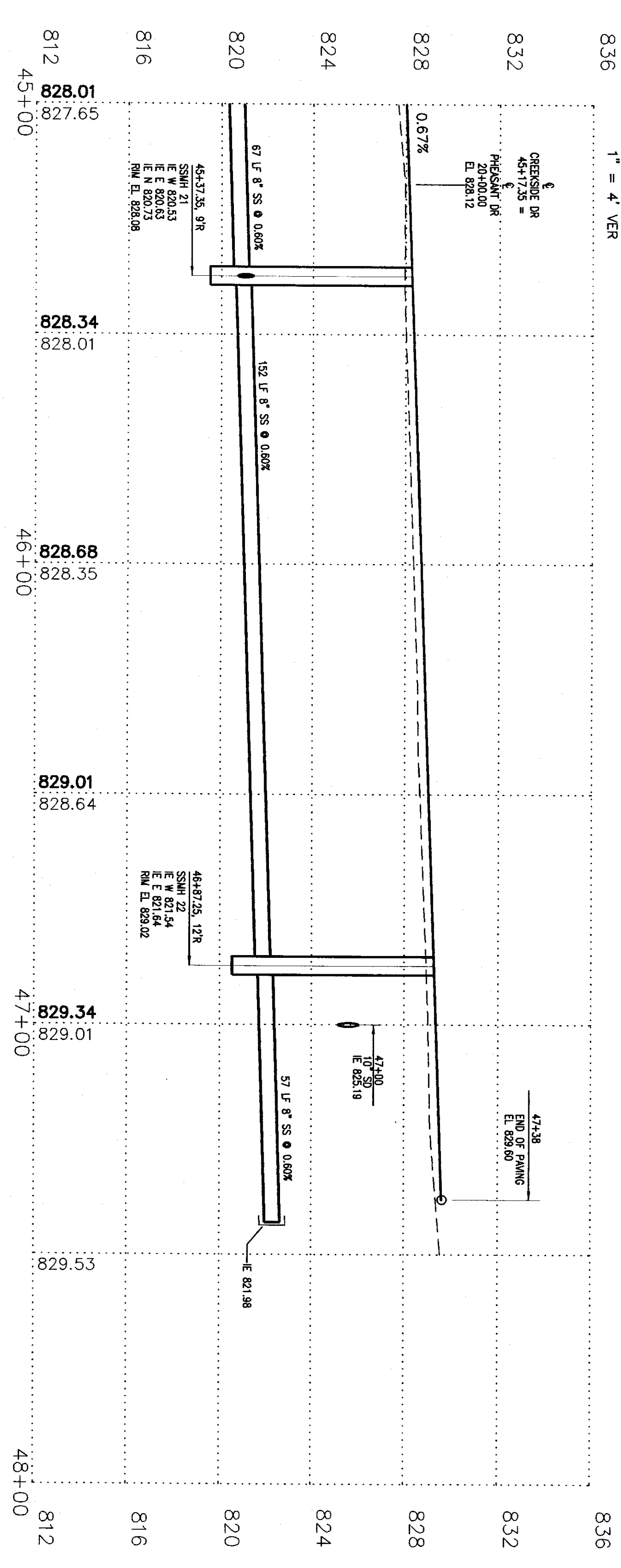
HALL ENGINEERING ASSOCIATES

10 SOUTH AUBURN - KENNEWICK, WA 98336
(509) 582-2200 - FAX (509) 582-2897

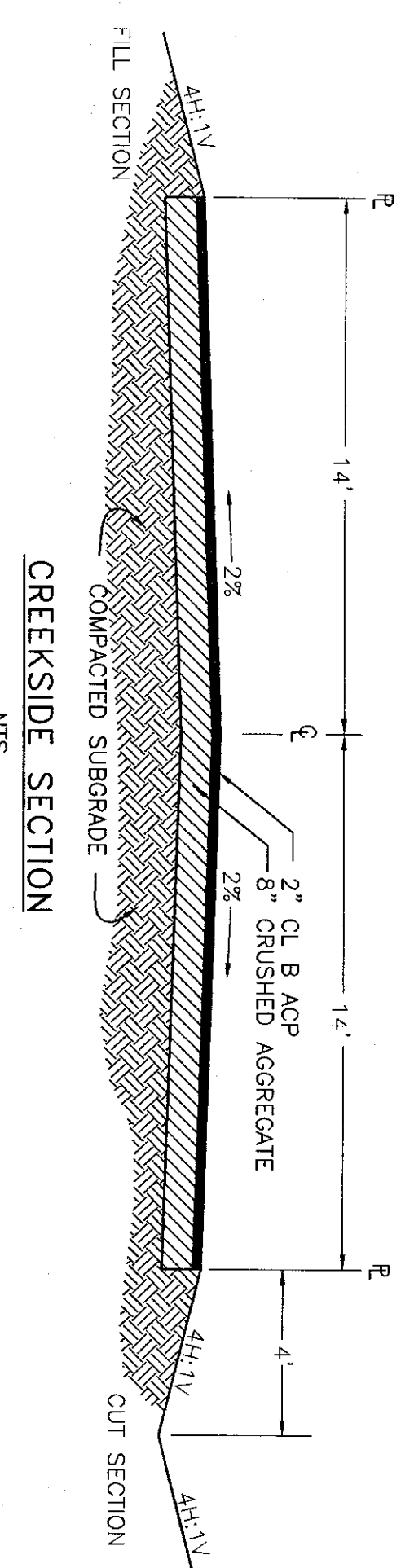
CALL BEFORE YOU DIG (800) 424-5555



SCALES:
 1" = 20' HOR
 1" = 4' VER



PROFILE LEGEND
 --- EXISTING GROUND
 --- DESIGN & FINISH GRADE
 --- ELEVATION



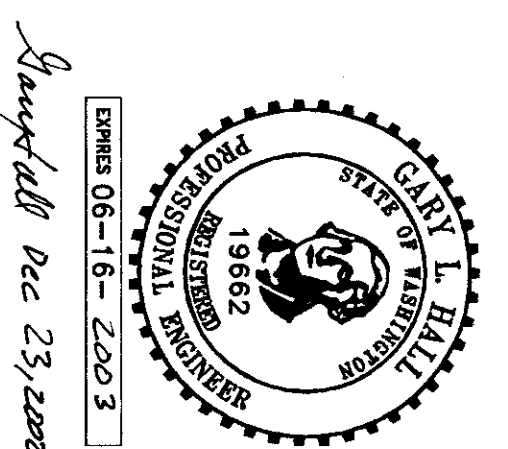
C.L. CURVE TABLE

NO.	Δ	RADIUS	LENGTH	TANGENT
1	57.2922°	54.00'	54.19'	292.62'
2	17.9516°	695.35'	217.49'	109.64'
3	49.4312°	54.00'	45.95'	23.02'

EOP RETURN CURVE TABLE

NO.	Δ	RADIUS	SM/COV EL.	COB EL.	SM/COV EL.
1	57.0105°	20'	45+01.55/827.74	827.88	45+35.99/827.97
2	81.7544°	20'	45+54.19/828.09	828.10	20+28.48/828.11

rs02001.dwg

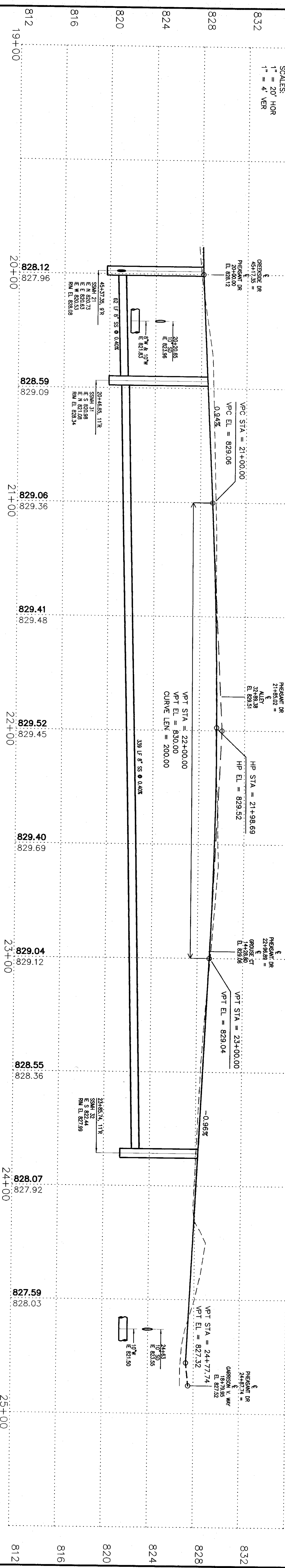
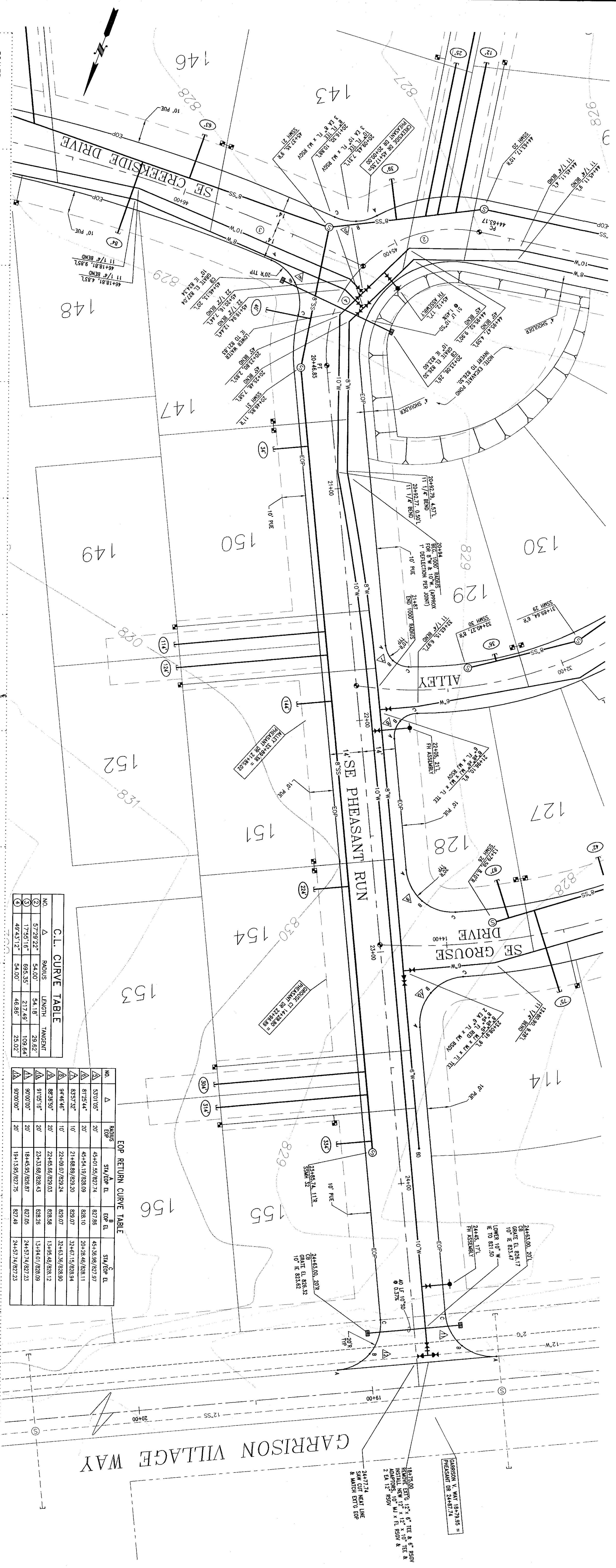


DATE: 12-23-02
 DRAWN BY: RJD
 DWG. NO: 061-0079

VALLEY DEVELOPMENT
 VILLAGES AT GARRISON CREEK PHASE VIII
 P/P SE CREEKSIDE DRIVE 45+00 TO 48+00

HALL ENGINEERING ASSOCIATES
 10 SOUTH ALBURN • KENNEDICK, WA 98336
 (509) 582-2200 • FAX (509) 585-2997

SHEET 3 OF 6
 CALL BEFORE YOU DIG (800) 424-5555



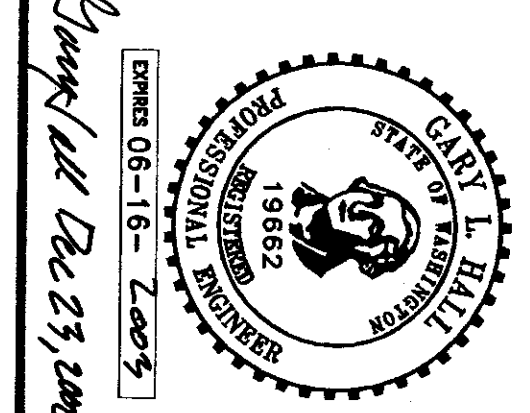
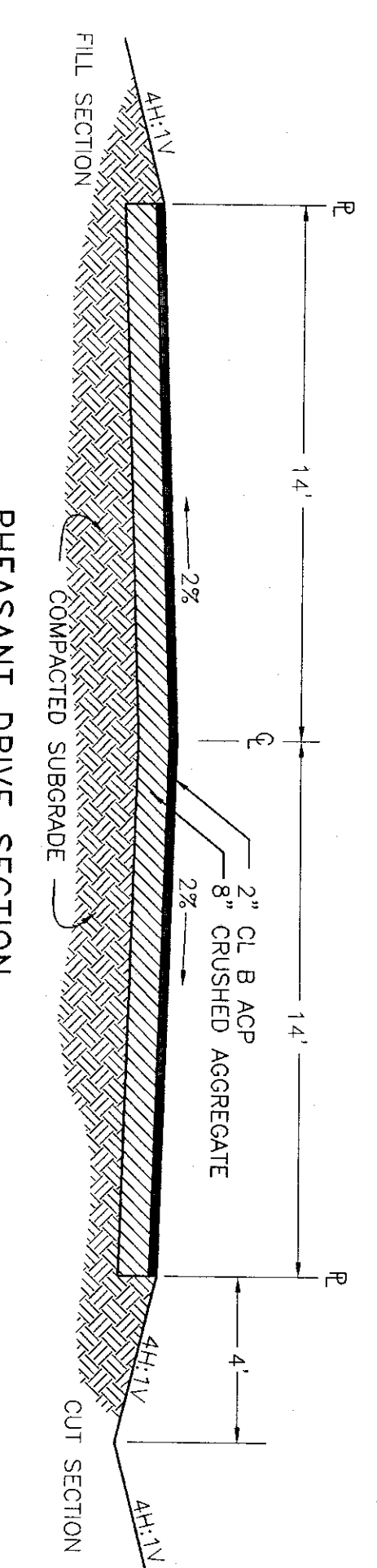
C.L. CURVE TABLE

NO.	Δ	RADIUS	LENGTH	TANGENT
1	Δ	5779.272'	54.00'	54.18'
2	Δ	17351.16'	65.55'	217.49'
3	Δ	49431.27'	54.00'	48.88'

EOP RETURN CURVE TABLE

NO.	Δ	RADIUS	SM/ΔP EL.	EOP EL.	SM/ΔP EL.
1	Δ	5779.272'	45+01.59/827.74	827.88	45+56.96/827.97
2	Δ	17351.16'	45+14.19/828.09	828.10	20+28.46/828.11
3	Δ	49431.27'	21+88.89/828.20	828.07	32+62.15/828.34
4	Δ	96862.54'	22+89.07/829.24	829.07	32+63.59/828.90
5	Δ	86738.50'	22+85.66/829.03	828.58	13+95.49/828.12
6	Δ	91071.16'	23+33.66/828.43	828.26	13+94.61/828.09
7	Δ	17351.16'	18+45.59/828.57	827.85	24+57.14/827.23
8	Δ	97007.00'	19+138.97/827.75	827.49	24+57.14/827.23

PROFILE LEGEND
 --- EXISTING GROUND
 --- DESIGN & FINISH GRADE
 --- DESIGN
 --- EXT. & ELEVATION

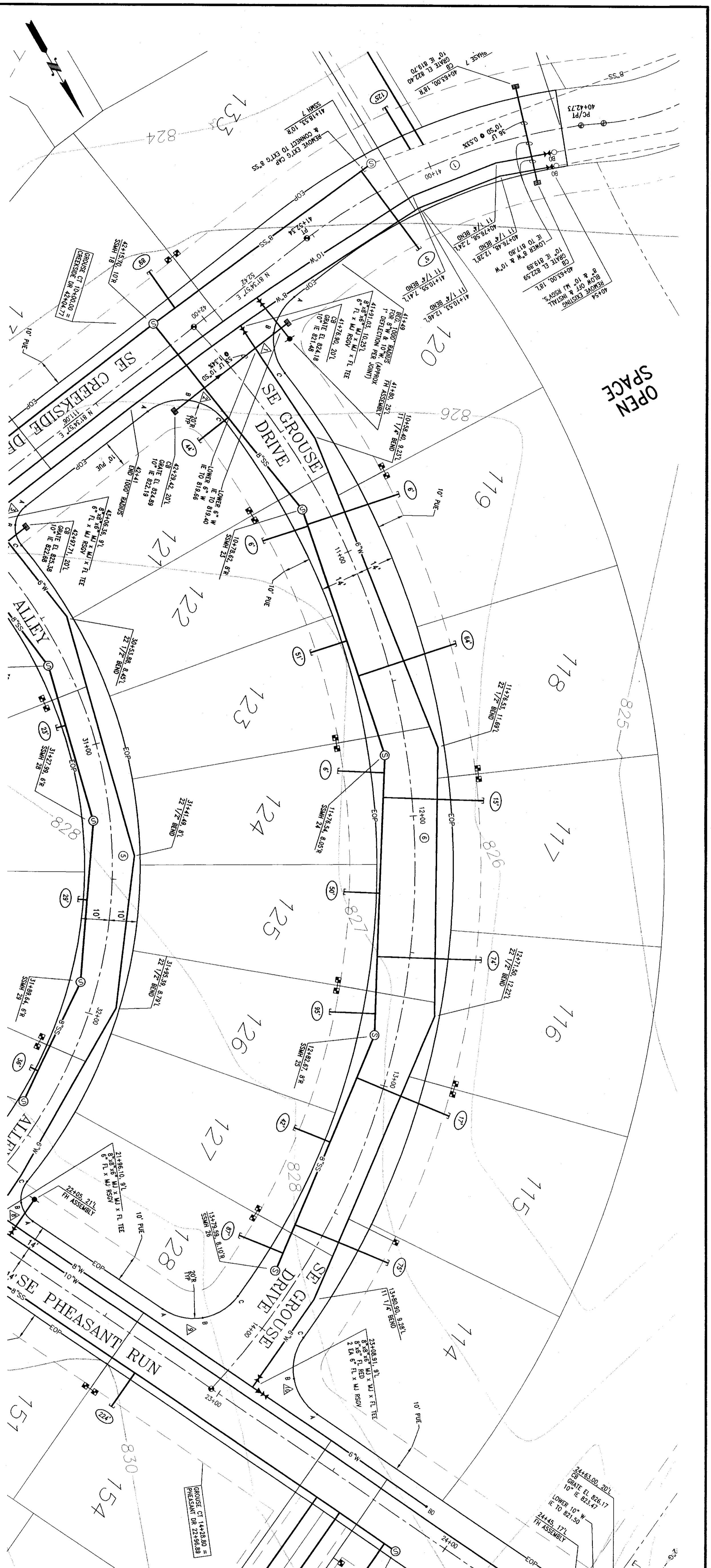


DATE: 12-23-02
 DRAWN BY: RLD
 CHECKED BY: DWG. NO. 061-D080

VALLEY DEVELOPMENT
 VILLAGES AT GARRISON CREEK PHASE VII
 PIP SE PHEASANT DRIVE

HALL ENGINEERING ASSOCIATES
 10 SOUTH AUBURN - KENNEWICK, WA 98336
 (509) 582-2200 - FAX (509) 586-2897

SHEET 4 OF 6
 CALL BEFORE YOU DIG (800) 424-5555

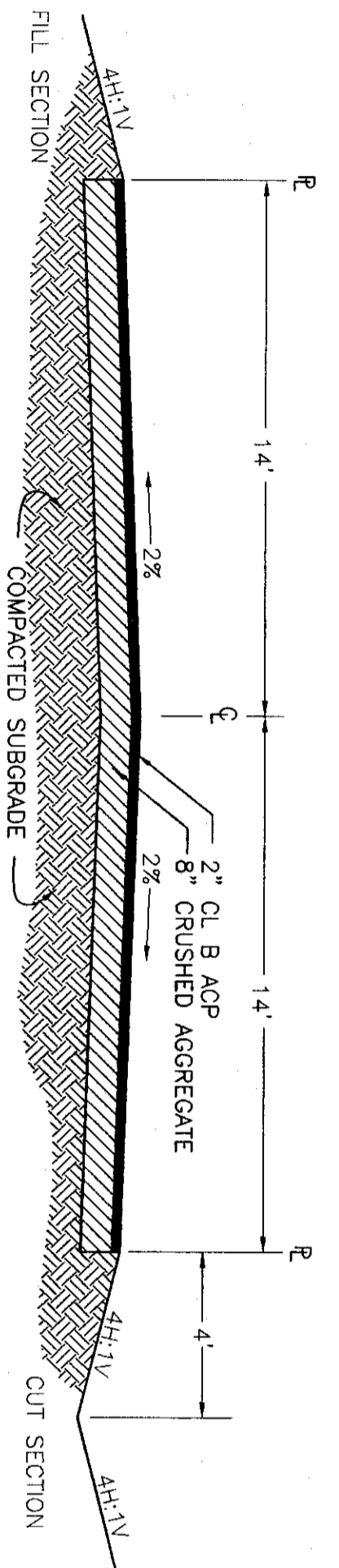
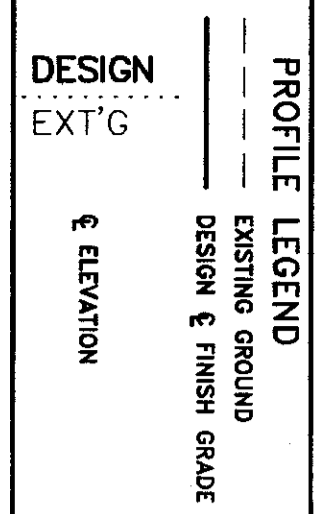
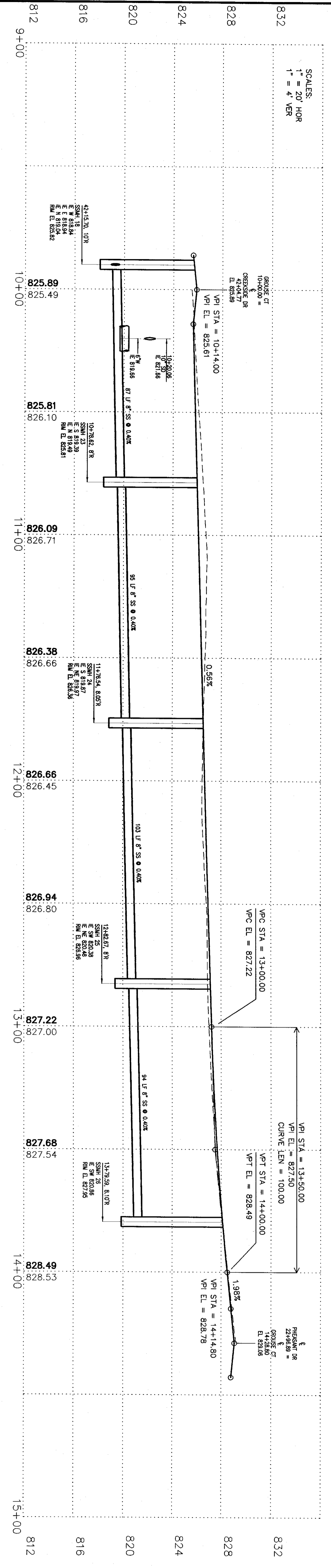


C.L. CURVE TABLE

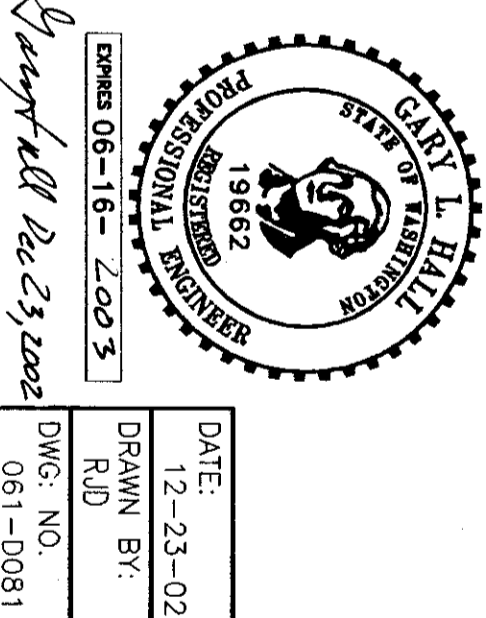
NO.	Δ	RADIUS	LENGTH	TANGENT
①	87°08'40"	282.03'	1428.80'	268.16'

EOP RETURN CURVE TABLE

NO.	Δ	RADIUS	STA/LOP EL.	EOP EL.	STA/LOP EL.
①	89°19'45"	20'	41+88.16/825.06	825.25	10+33.69/825.44
②	90°51'19"	20'	42+37.16/825.96	825.71	10+33.69/825.45
③	88°26'30"	20'	22+46.69/825.03	825.35	13+56.46/828.12
④	91°05'16"	20'	23+33.68/828.43	828.28	13+56.46/828.09



rcp01003.dwg

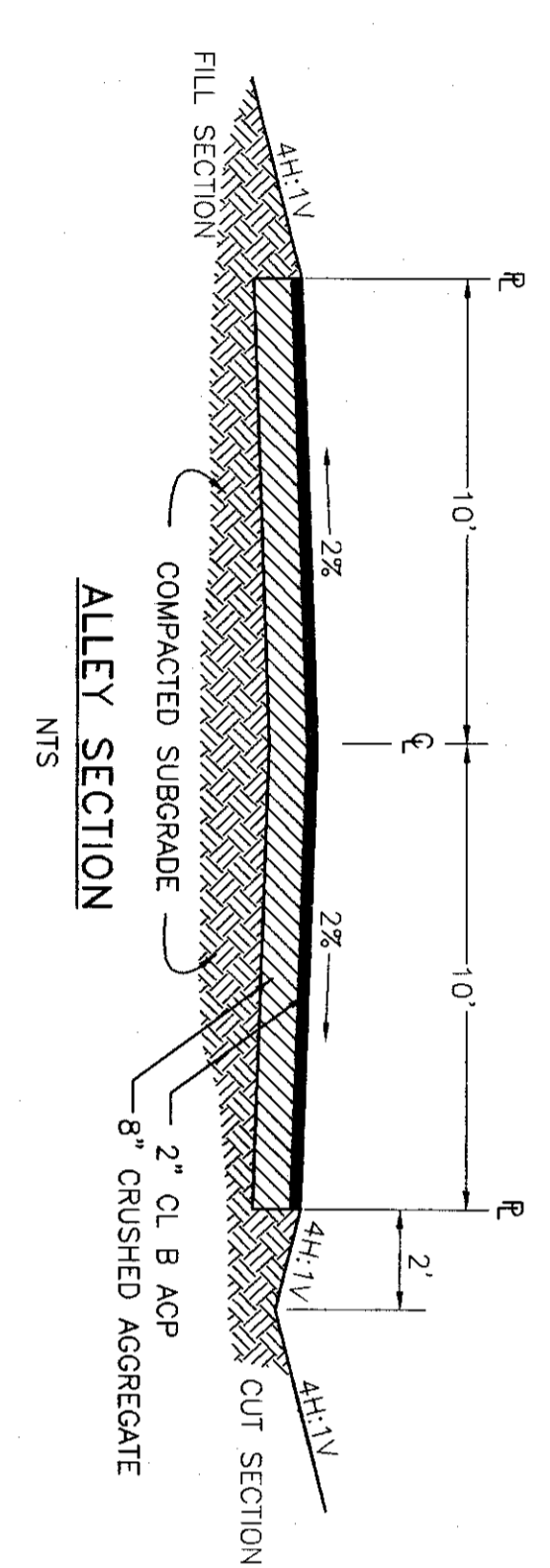
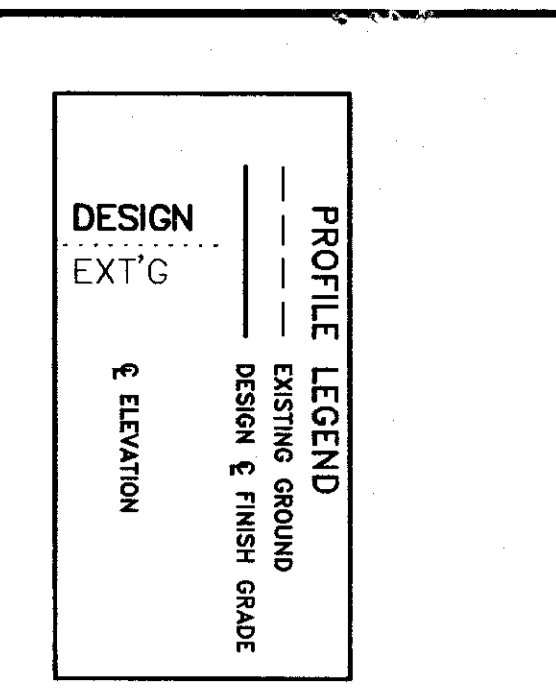
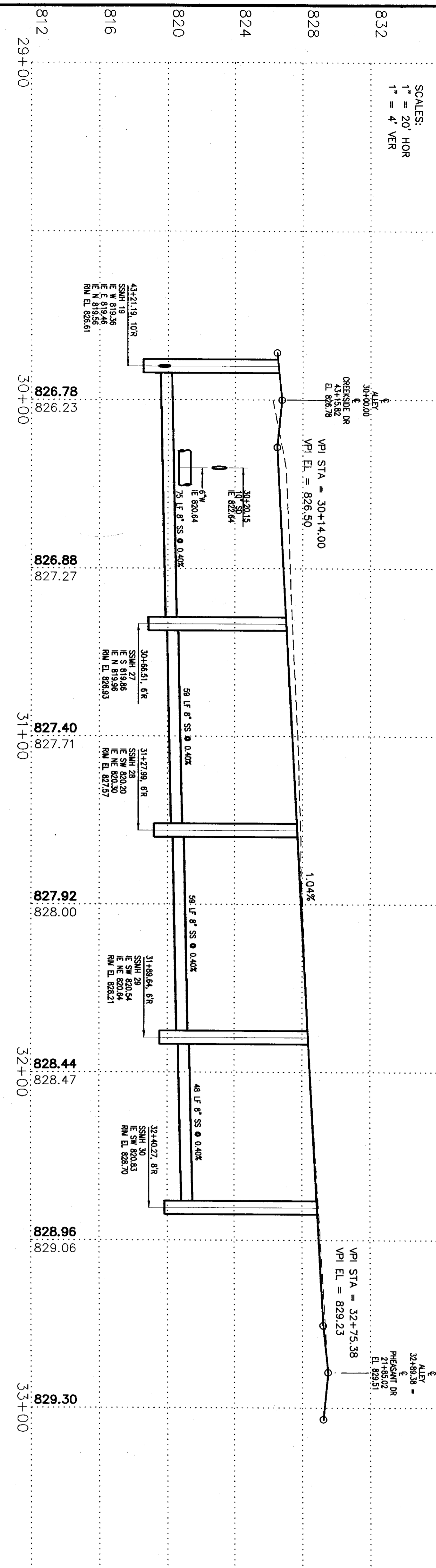
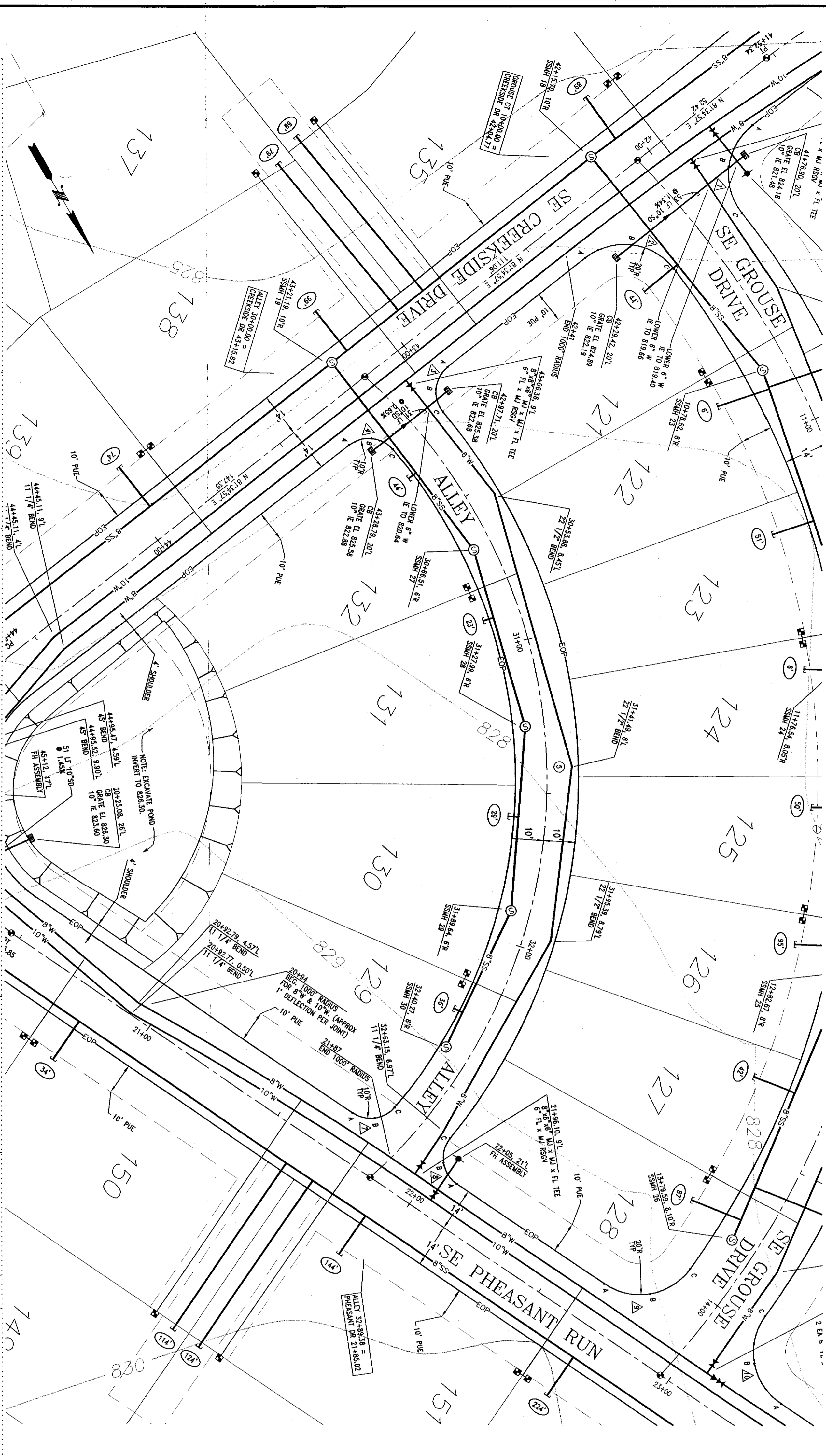


DATE: 12-23-02
 DRAWN BY: RJD
 DWG. NO: 061-0081

VALLEY DEVELOPMENT
 VILLAGES AT GARRISON CREEK PHASE VIII
 PIP SE GROUSE COURT

HALL ENGINEERING ASSOCIATES
 10 SOUTH AUBURN • KENNESAW, VA 99335
 (509) 582-2000 • FAX (509) 586-2897

SHEET 5 OF 6
 CALL BEFORE YOU DIG (800) 424-5555



C.L. CURVE TABLE

NO.	Δ	RADIUS	LENGTH	TANGENT
①	96°22'46"	172.03'	289.38'	192.34'

EOP RETURN CURVE TABLE

NO.	Δ	RADIUS	SM/EP EL.	EP ^B EL.	SM/EP ^B EL.
①	91°52'45"	10'	42+93.24/828.34	828.38	30+24.81/828.41
②	87°37'34"	10'	43+33.27/828.61	828.51	30+23.33/828.40
③	83°57'32"	10'	21+88.89/829.20	829.07	32+61.15/828.34
④	94°46'46"	10'	22+09.07/829.24	829.07	32+63.39/828.90

SCALE: 1" = 20' HOR
1" = 4' VER

DESIGN & FINISH GRADE
EXISTING GROUND
ELEVATION

DATE: 12-23-02
DRAWN BY: RJD
DWG. NO.: 061-0082

SEAL: GARY L. HALL, PROFESSIONAL ENGINEER, 19682, EXPIRES 06-16-2003

CALL BEFORE YOU DIG (800) 424-5555

VALLEY DEVELOPMENT
VILLAGES AT GARRISON CREEK PHASE VIII
PIP ALLEY

HALL ENGINEERING ASSOCIATES
10 SOUTH AUBURN • KENNEBICK, WA 98336
(509) 582-2200 • FAX (509) 586-2897