

VGC Board Meeting 10/27/21
New VGC Maintenance/Storage Shed...Request for Board Approval

- 1) With Roger Williams' house now up for sale, we have lost our storage space for the VGC riding lawnmower.
- 2) This exacerbates our need for storage space for VGC equipment. We also need a space to consolidate storage of our brush shredder/grinder; chainsaw; signage; safety vests, and; miscellaneous items currently stored in the Clock Tower and in the garages of VGC volunteers.
- 3) We received preliminary Board and ARC approval to pursue purchase of a tastefully-designed, high quality "maintenance/storage shed" to provide storage space for the VGC equipment and miscellaneous items and to provide a workbench, storage shelves and open enclosed space for maintenance of equipment and to support other volunteer VGC efforts.
- 4) Our current recommendation is: a) Purchase a 16' x 24' Old Hickory Utility Shed to be erected in place..see attached 2 photos....and provide electric and gas service to shed. After receiving objections from homeowners from two preferred common area sites close to homes, locate shed in the deeded common area south of the Creek in the west pasture S of Village 5 in between the large cluster of wild roses and the blackberries on the south hill (SSW of Bridge 1).
- 5) Cost Estimate (assuming no price increases before January 2022):
 - * \$17,387.....16' x 24' Utility Shed erected in place, payable to Old Hickory
 - * \$ 1,400.....Contractor erection cost
 - * \$ 2,000.....Site leveling & compaction of gravel
 - * \$ 3,000.....Generator, electric wiring, propane tank & space heater
 - \$24,787.....Total
- 6) Joel Tax of Reserve Data, Inc indicated he can set up the Utility Shed in the VGC Reserve Plan as a new VGC asset.
---We request Board approval to add this new asset to the 2022 Reserve Plan.

Ray Goff, Volunteer VGC Common Area Maintenance Committee

the Price Guide to see available sizes.

Scan the QR code or visit oldhickorysheds.com/priceguide to view the Price Guide online.



UTILITY SHEDS

The gable style roof of the Utility Shed provides the option for increased wall height, making it feel more spacious on the inside and leaving room on the walls for tool or storage shelves, long garden tools, or ladders. Add a package from pages 7-8 to your Utility Shed to suit your specific needs.

ENGINEER
certified



10ft x 14ft Utility Shed
Brown Metal Roof
Navajo Paint and Barn White Trim Paint on LP Smart Panel Siding
Shown with extra options: one 2ft x 3ft Window with Shutter Trim, two 10" x 29" windows in Double Barn Doors and 8ft Tall Walls

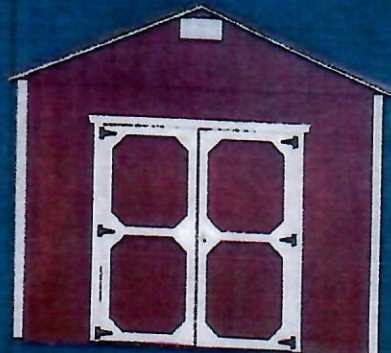
KEY FEATURES

- 6ft 3in standard inside wall height
- 7ft (81in inside) or 8ft (92in inside) available
- 8ft wide buildings come with a single barn door
- 10ft and wider come with double barn doors (excluding packages)

SIDE UTILITY SHED



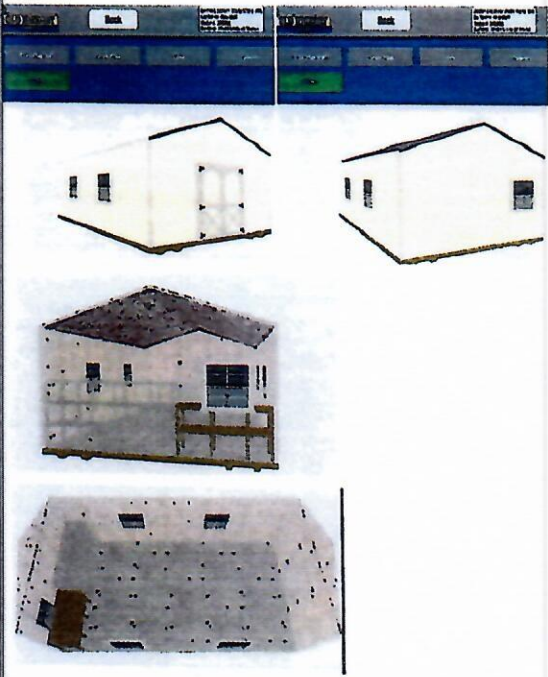
T1-11 PRESSURE TREATED SIDING
Shown with extra options including two 2ft x 3ft windows.



MAHOGANY URETHANE & BARN WHITE TRIM PAINT ON SMART PANEL SIDING



FRAMING SPECS VARY BY LOCAL BUILDING REQUIREMENTS



10/20/21

New Quote

16' x 24'

(14'9" x 22'2" Interior)

\$17,387